



PRX250

CAMERA INSPECTION SYSTEM FOR LIVE GAS MAINS

2"-12" | CAST IRON, STEEL & PE MAINS

The PRX250 is the most comprehensive and innovative live gas main camera system which was designed from the ground-up to provide gas utilities with the **highest quality, most cost effective and reliable pipeline inspection possible.**



PRODUCT BENEFITS

Clear, Well-Lit View of the Gas Main

The PRX250 Camera Head has a self-deploying centering system to ensure clear views of the main. The camera operator can also see the top of the main by inspection crews.

Motor Controlled Camera Speed

Smooth camera movement through live gas mains allows the camera operator to perform inspections with greater accuracy and efficiency.

Safe, No-Blow Launch Into Live Gas Mains

Using our patented no-blow launch tube, the PRX250 camera head is able to launch into and operate in live gas mains without letting any methane escape.

Launch Through Small Pits or Keyholes

The PRX250 Camera can enter live gas mains through compact pits or cost effective keyholes to reduce the cost of excavation and street restoration.

Adapts to a Variety of Fittings and Valves

This versatile system can be adapted to a wide range of fitting and valve combinations for vertical or angular entry into metallic or plastic gas mains.

Reduced Excavation and Restoration Costs

Maximized camera travel distances ensures that more pipeline can be inspected through fewer excavations to reduce excavation and restoration costs.



PRX250

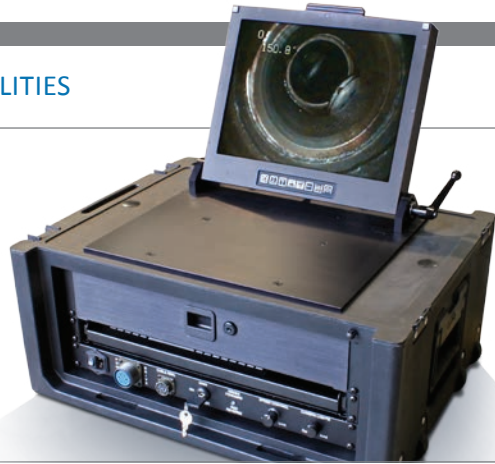
CAMERA INSPECTION SYSTEM FOR LIVE GAS MAINS

2"–12" | CAST IRON, STEEL & PE MAINS



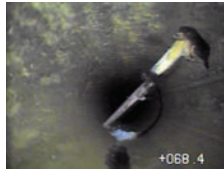
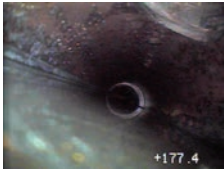
DELIVERING VALUE TO GAS UTILITIES

The PRX250 Camera Inspection System for Live Gas Mains was designed and built to provide a high yield on the equipment investment very quickly through faster, more reliable and higher quality inspections, reduced excavation through further camera travel distances and reductions in personnel required on site. In addition, less time in the roadway translates directly to reduced visibility of gas utility maintenance activities and a reduction in public disruption.



A PROBLEM SOLVING TOOL

- Locate joints, services, taps, and other features
- Internal corrosion investigations
- Look for water or debris in gas mains
- Identify source of water infiltration
- Locating blockages and causes for low or reduced main pressure
- Pre/Post inspections of liner installations and insertion projects
- Look for undocumented service connections
- Leak investigations to locate obvious leak paths or cracks in the main
- Verify proper valve operation and type
- Inspecting welds on PE or steel pipe



VERSATILE LAUNCH OPTIONS

The PRX250 Camera System is extremely versatile and can be adapted to a wide range of fitting and valve combinations for vertical or angular entry into pressurized cast iron, steel and plastic mains. This can be accomplished using saddles, repair clamps, weld fittings and electrofusion plastic fittings.



Launch Through Conventional Pits

01 The PRX250 Launch Tube adapts to a wide variety of industry standard fittings, valves and clamps to enable no-blow launch into pressurized cast iron, steel and plastic gas mains through 3' x 5' excavations.



PRX250K Keyhole Launch

02 To help further reduce the cost of excavation and street restoration for visual assessment of live gas mains, the PRX250 can be launched and operated through an 18" diameter keyhole.



Curved Launch

03 To insert the PRX250 Standard Camera Head into smaller 2" and 3" mains, a curved launch tube can be connected to the main. This entry method requires a main cut-out to be performed.



Mini-PRX250 2" PE Launch

04 The Mini-PRX250 camera head, reel and launch tube allow gas utilities to visually inspect over 800' of 2" PE/plastic mains through one excavation.